

5' Extension

Weight - 1,575 Lbs
 Item# - 1201050

#4 @ 9" O.C.
 Extending 18"

SCALE: 3/8"=1'-0"



1100 Heritage Parkway, Mansfield, Texas 76063
 Phone: 817.453.1054 Fax: 817.453.4007

TXDOT-CIX-TYPE E-5ST1

FILE NAME: 260DITXDOT-CIX-TYPEE-5ST1_F.dwg

ISSUE DATE: January, 2003

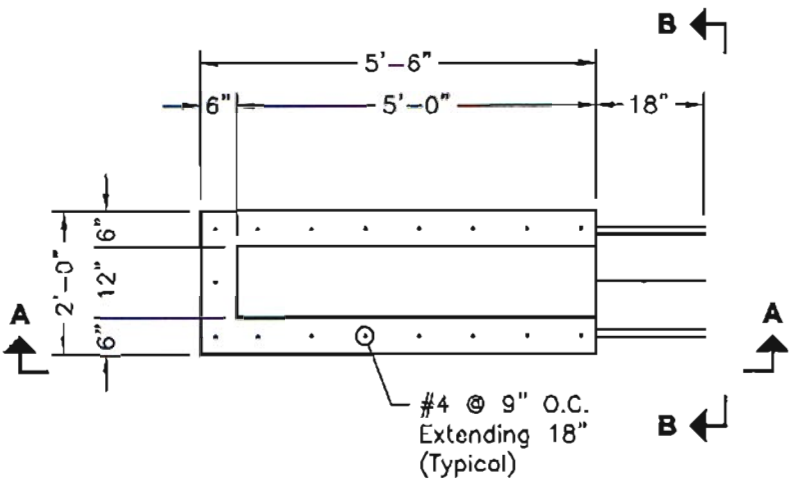
www.oldcastleprecast.com

**1'-0" x 5'-0" x 10" I.D.
 Curb Inlet Extension Type "E"
 TxDOT - Stage 1**

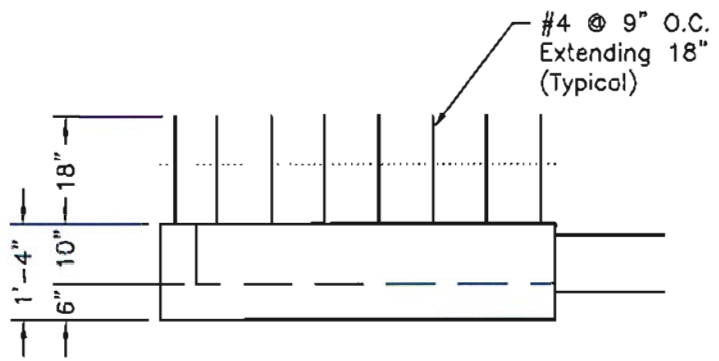
Copyright © 2003 Oldcastle Precast, Inc.

SPECIFICATIONS:

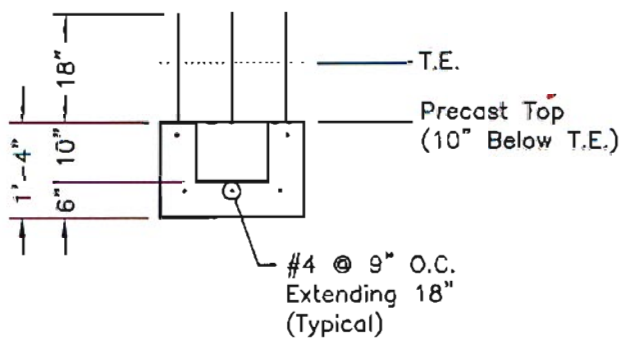
1. Concrete: Has a Design Strength of 5,000 psi at 28 Days.
2. Steel Reinforcement: ASTM A-615, Grade 60.
3. Loading: Designed for H20 Loading.



PLAN VIEW



ELEVATION A-A



ELEVATION B-B

SCALE: 3/8"=1'-0"



1100 Heritage Parkway, Mansfield, Texas 76063
Phone: 817.453.1054 Fax: 817.453.4007

TXDOT-CIX-TYPE E-5ST1
FILE NAME: 2600ITXDOT-CIX-TYPEE-5ST1_B.dwg
ISSUE DATE: January, 2003
www.oldcastleprecast.com

1'-0" x 5'-0" x 10" I.D.
Curb Inlet Extension Type "E"
TxDOT - Stage 1

Copyright © 2003 Oldcastle Precast, Inc.