

**Top Type E
10' Extension**

Weight - 2,150 Lbs
 Right Item# - 1201058
 Left Item# - 1201057

**Base Type E
10' Extension**

Weight - 3,450 Lbs
 Right Item# - 1201059
 Left Item# - 1201061

Note: Left Extension Shown

SCALE: 3/8"=1'-0"



1100 Heritage Parkway, Mansfield, Texas 76063
 Phone: 817.453.1054 Fax: 817.453.4007

TXDOT-CIX-TYPE E-10

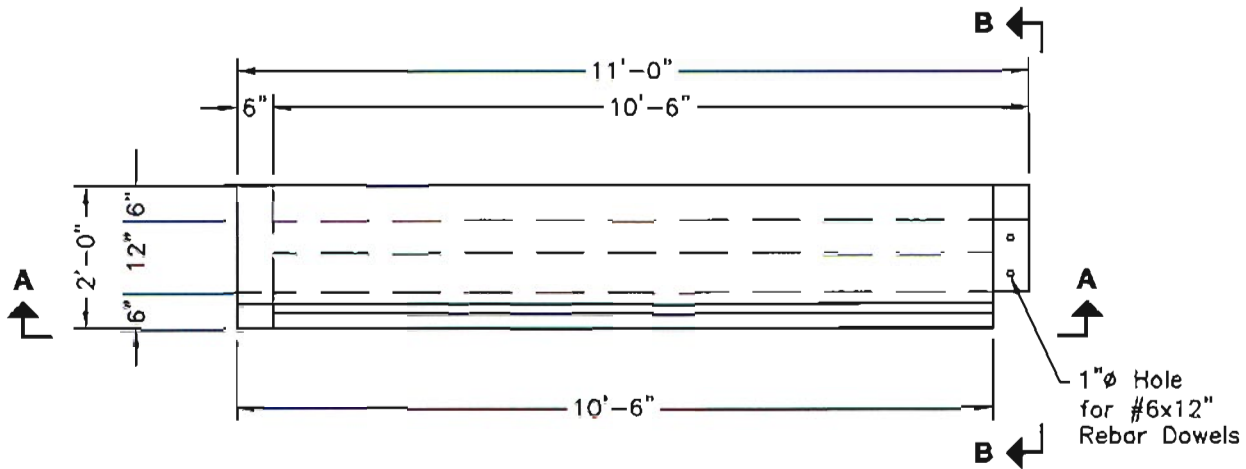
FILE NAME: 260DITXDOT-CIX-TYPEE-10_F.dwg

ISSUE DATE: January, 2003

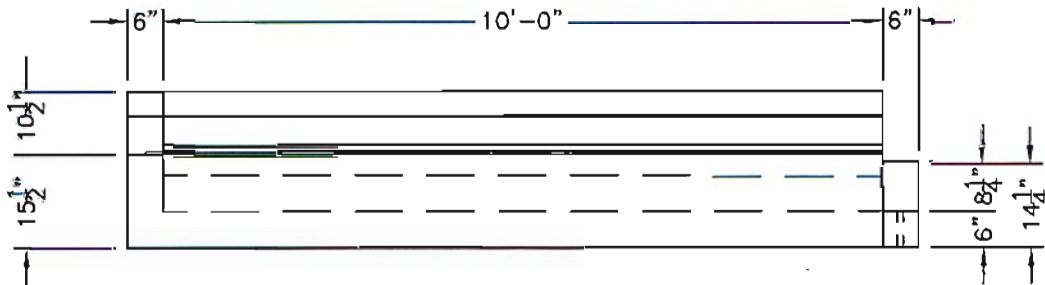
www.oldcastleprecast.com

1'-0" x 10'-0" x 10"
Curb Inlet Extension Type "E"
TXDOT

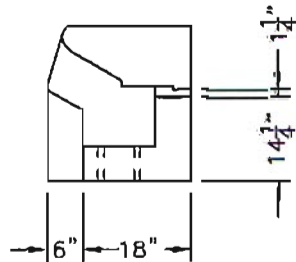
Copyright © 2003 Oldcastle Precast, Inc.



PLAN VIEW



ELEVATION A-A



ELEVATION B-B

SPECIFICATIONS:

1. Concrete: Has a Design Strength of 5,000 psi at 28 Days.
2. Steel Reinforcement: ASTM A-615, Grade 60.
3. Loading: Designed for H20 Loading.

Note: Left Extension Shown

SCALE: 3/8" = 1'-0"



1100 Heritage Parkway, Mansfield, Texas 76063
Phone: 817.453.1054 Fax: 817.453.4007

TXDOT-CIX-TYPE E-10

FILE NAME: 260DITXDOT-CIX-TYPEE-10_B.dwg

ISSUE DATE: January, 2003

www.oldcastleprecast.com

1'-0" x 10'-0" x 10"
Curb Inlet Extension Type "E"
TxDOT

Copyright © 2003 Oldcastle Precast, Inc.