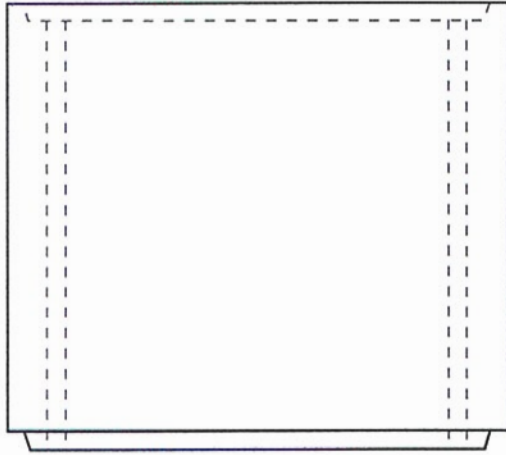
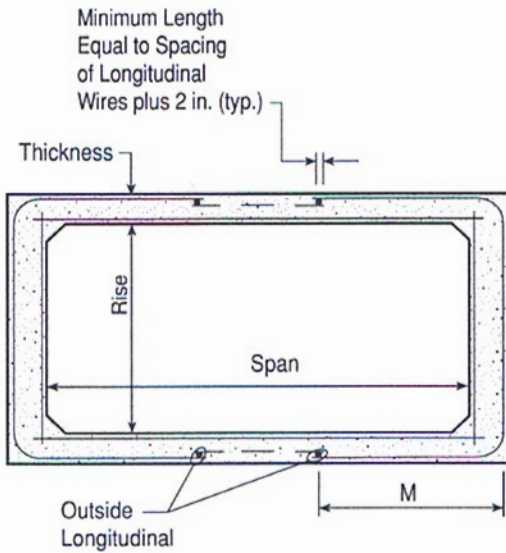


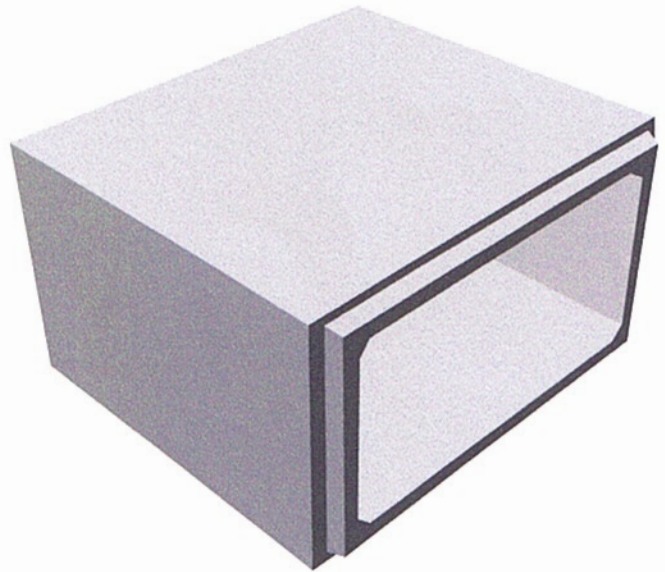
Precast Box Culverts



Plan View



Front View



Isometric View

Product Specifications

"Box Culvert" per ASTM C-1433 specifications. Contact our office for additional information on available sizes and cost.

Materials

CONCRETE: 5,000 PSI, Type II cement.

REINFORCING: as per ASTM C-1433.

-No Scale-
All dimensions subject to allowable specification tolerances.