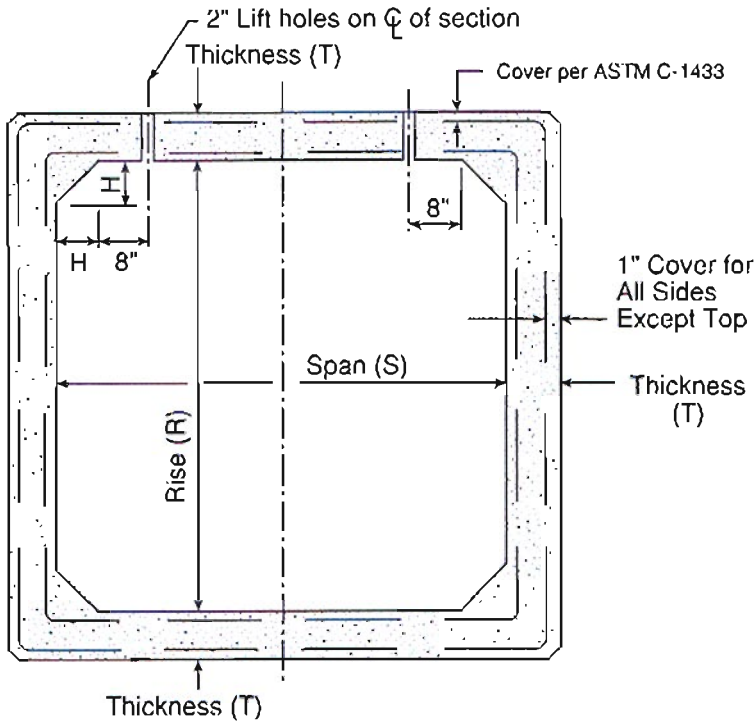
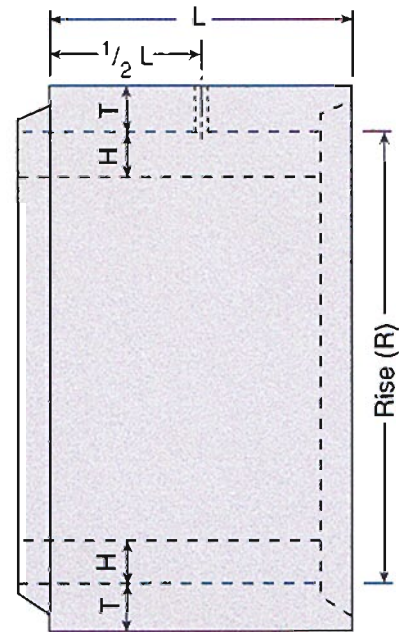


Precast Box Culverts



Section



Side View

Basic Dimensions						
Span S (ft.)	Rise R (ft.)	Wall Thick. T (in.)	Sect. Length L (ft.)	Weight per ft. (lbs./ft.)	Haunch H (in.)	Box Opening (ft ²)
10	3	10	6	3,870	12	28.0
10	4	10	6	4,120	12	38.0
10	5	10	6	4,370	12	48.0
10	6	10	6	4,620	12	58.0
10	7	10	6	4,870	12	68.0
10	8	10	6	5,120	12	78.0
10	9	10	6	5,370	12	88.0
10	10	10	6	5,620	12*	98.0
11	3	11	6	4,610	12	31.0
11	4	11	6	4,890	12	42.0
11	5	11	6	5,160	12	53.0
11	6	11	6	5,430	12	64.0
11	7	11	6	5,705	12	75.0

Basic Dimensions						
Span S (ft.)	Rise R (ft.)	Wall Thick. T (in.)	Sect. Length L (ft.)	Weight per ft. (lbs./ft.)	Haunch H (in.)	Box Opening (ft ²)
11	8	11	6	5,980	12	86.0
11	9	11	6	6,250	12	97.0
11	10	11	6	6,530	12	108.0
11	11	11	6	6,805	12	119.0
12	3	12	6	5,400	12	34.0
12	4	12	6	5,700	12	46.0
12	5	12	6	6,000	12	58.0
12	6	12	6	6,300	12	70.0
12	7	12	6	6,600	12	82.0
12	8	12	6	6,900	12	94.0
12	9	12	6	7,200	12	106.0
12	10	12	6	7,500	12	118.0
12	11	12	6	7,800	12	130.0
12	12	12	6	8,100	12	142.0

Note:

- (a.) Specifications: ASTM C-1433
- (b.) Railroad loading designs are available.

-No Scale-
 All dimensions subject to allowable specification tolerances.