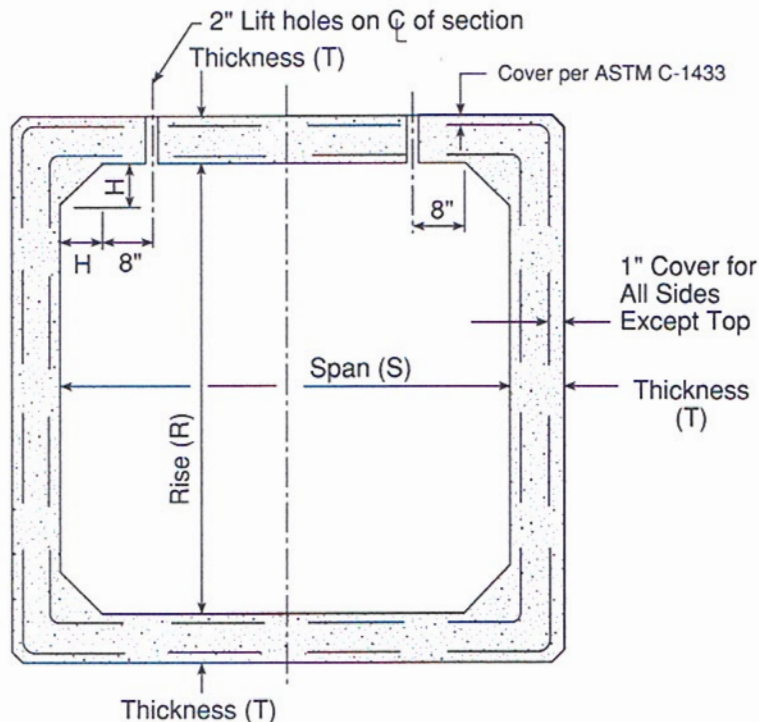
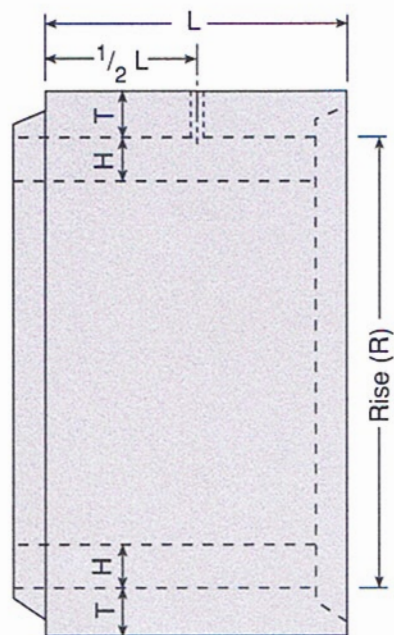


Precast Box Culverts



Section



Side View

Basic Dimensions

Span S (ft.)	Rise R (ft.)	Wall Thick. T (in.)	Sect. Length L (ft.)	Weight per ft. (lbs./ft.)	Haunch H (in.)	Box Opening (ft ²)
6	3	7	6	1,870	12	16.0
6	4	7	6	2,050	12	22.0
6	5	7	6	2,225	12	28.0
6	6	7	6	2,400	12	34.0
7	3	8	6	2,230	12	19.0
7	4	8	6	2,525	12	26.0
7	5	8	6	2,725	12	33.0
7	6	8	6	2,925	12	40.0
7	7	8	6	3,125	12	47.0

Basic Dimensions

Span S (ft.)	Rise R (ft.)	Wall Thick. T (in.)	Sect. Length L (ft.)	Weight per ft. (lbs./ft.)	Haunch H (in.)	Box Opening (ft ²)
8	3	8	6	2,595	12	22.0
8	4	8	6	2,795	12	30.0
8	5	8	6	2,995	12	38.0
8	6	8	6	3,195	12	46.0
8	7	8	6	3,395	12	54.0
8	8	8	6	3,595	12	62.0
9	3	9	6	3,255	12	25.0
9	4	9	6	3,425	12	34.0
9	5	9	6	3,650	12	43.0
9	6	9	6	3,875	12	52.0
9	7	9	6	4,100	12	61.0
9	8	9	6	4,325	12	70.0
9	9	9	6	4,550	12	79.0

Note:

- (a.) Specifications: ASTM C-1433
- (b.) Railroad loading designs are available.

-No Scale-

All dimensions subject to allowable specification tolerances.