

**Type "P"**  
**Safety-End-Treatment**  
 Variable (See Chart)

SCALE: NONE



1100 Heritage Parkway, Mansfield, Texas 76083  
 Phone: 817.453.1054 Fax: 817.453.4007

**TYPE-P-SET**

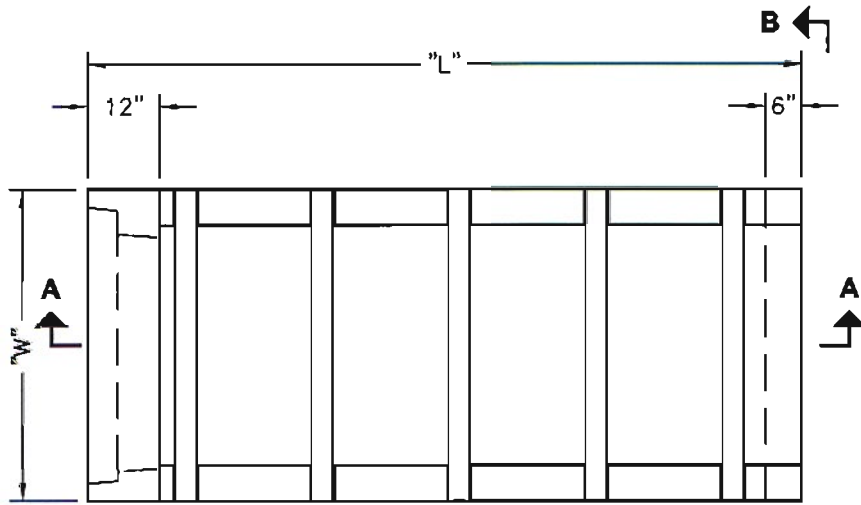
FILE NAME: 260DPTYP-P-SET\_F.dwg

ISSUE DATE: January, 2003

[www.oldcastleprecast.com](http://www.oldcastleprecast.com)

**36" & 42" Type "P"**  
**Safety-End-Treatment**  
**Variable Slopes**

Copyright © 2002 Oldcastle Precast, Inc.



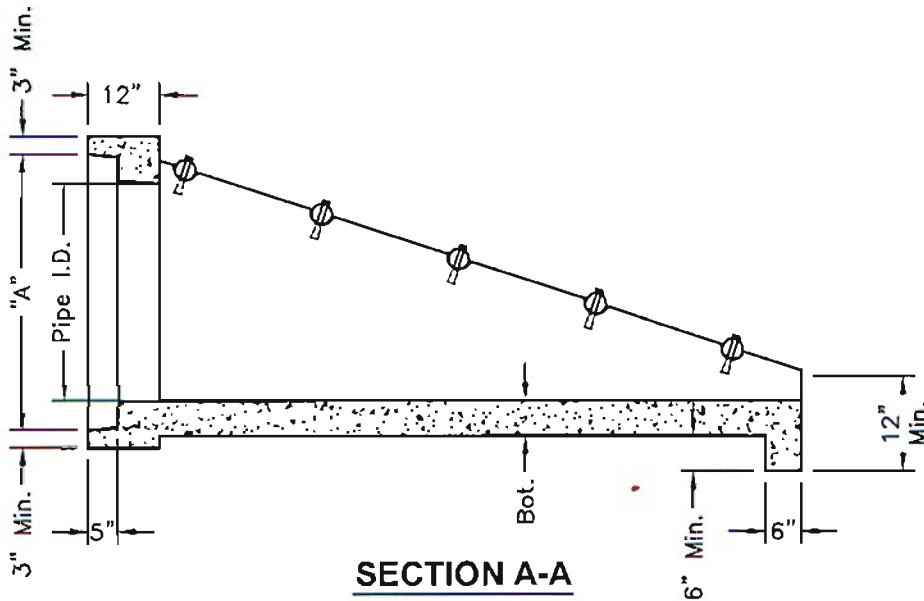
**Plan View**

**SPECIFICATIONS:**

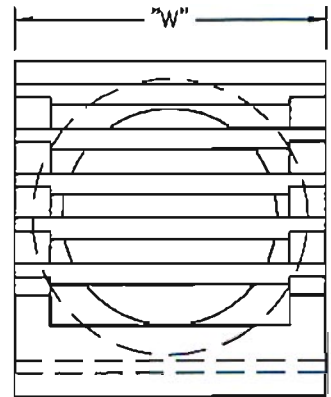
1. Concrete: Has a Design Strength of 5,000 psi at 28 Days.
2. Steel Reinforcement: ASTM A-615, Grade 60 or ASTM A-497 Welded Wire Fabric.
3. Loading: Designed for H20 Loading.
4. C.I. Castings: ASTM A48, Class 30/35.

**GENERAL NOTES:**

1. Class "C" Concrete.
2. All Exposed Corners shall be Chamfered  $\frac{3}{4}$ "



**SECTION A-A**



**ELEVATION B-B**

Pipe I.D.	Slope	Weight	W	L	Wall	Bot.	A	Item#
36"	3:1	7,000 Lbs.	52"	119"	6"	6"	46"	1223340
	4:1	8,850 Lbs.	52"	154"	6"	6"	46"	1223380
	6:1	12,500 Lbs.	52"	228"	6"	6"	46"	1223460
42"	3:1	10,875 Lbs.	61"	142"	8"	6"	53"	1223500
	4:1	13,750 Lbs.	61"	186"	8"	6"	53"	1223540
	6:1	19,750 Lbs.	61"	276"	8"	6"	53"	1223580

SCALE: 3/8"=1'-0"



1100 Heritage Parkway, Mansfield, Texas 76063  
Phone: 817.453.1054 Fax: 817.453.4007

**TYPE-P-SET**

FILE NAME: 260DPTYP-P-SET\_B.dwg

ISSUE DATE: January, 2003

[www.oldcastleprecast.com](http://www.oldcastleprecast.com)

**36" & 42" Type "P"  
Safety-End-Treatment  
Variable Slopes**

Copyright © 2002 Oldcastle Precast, Inc.